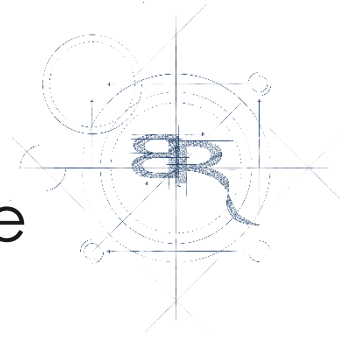

THE NATIONAL CENTRE FOR RESEARCH & DEVELOPMENT

The largest R&D funding and co-funding Agency in Central Europe



DIVERSITY OF ACTIVITIES

58 calls for proposals in 2019



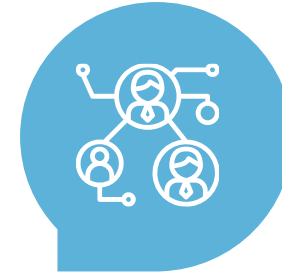
FINANCIAL RESOURCES

over PLN 5 bn spent annually to support R&D activities



TERRITORIAL OUTREACH

12 bilateral agreements with Singapore, Taiwan, RSA, Israel and EU Member States



INSTITUTIONAL OUTREACH

cooperation with: NCN, ARP, KGHM, NFOSIGW, GDDKiA, numerous consortia & partnerships

THE VOICE OF POLISH SCIENCE AND BUSINESS IN BRUSSELS

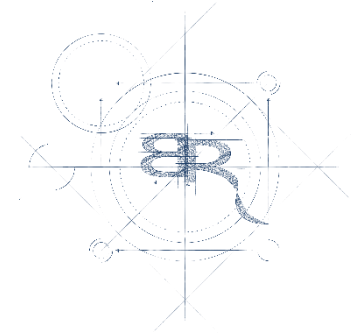
NCBR as a **scientific partner** of Business & Science Poland (BSP), represents Polish research & innovation interests within the European Union.

The **key purpose** of Brussels activities is to promote and **increase Polish participation in the EU programmes for research and innovation**, especially in the forthcoming Horizon Europe.

Main activities:

- Networking with the European institutions and partners in Brussels
- Strategic monitoring, analysis and dissemination of information on EU research & innovation policy and programmes.
- Organization of events in Brussels

Business & Science Poland is an Employers' Association registered in Poland. BSP's mission is to support Polish entrepreneurs and science in the effective formation of the European agenda, as well as in programming and spending EU funds on science, research and development as well as investments. BSP members are Polish entities that are able to define their interests in the long term and want to effectively manage regulatory risk.

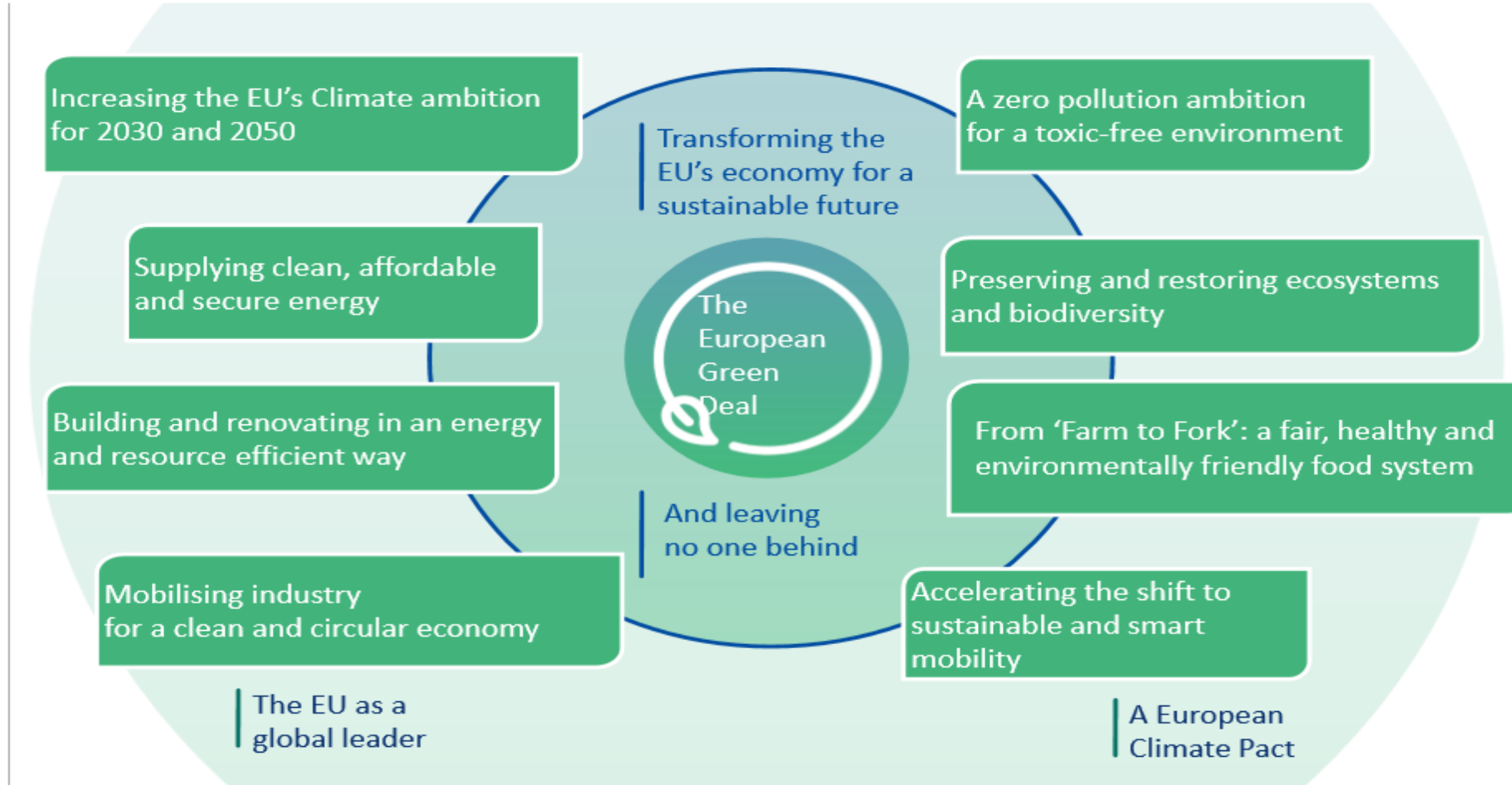
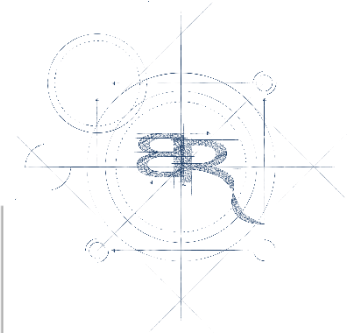


BSP

BUSINESS & SCIENCE
POLAND

Closer look at Horizon Europe

The European Green Deal – new economic model for EU



UE Climate neutrality by 2050

Horizon Europe

Horizon Europe

THE NEXT EU RESEARCH & INNOVATION PROGRAMME (2021 – 2027)



(2021 – 2027)

€95.5 billion

Pillar 1 Excellent Science

European Research Council

Marie Skłodowska-Curie
Actions

Research Infrastructures

Pillar 2 Global Challenges and European Industrial Competitiveness

- Clusters
- Health
 - Culture, Creativity and Inclusive Society
 - Civil Security for Society
 - Digital, Industry and Space
 - Climate, Energy and Mobility
 - Food, Bioeconomy, Natural Resources, Agriculture and Environment

Joint Research Centre

Pillar 3 Innovative Europe

European Innovation
Council

European innovation
ecosystems

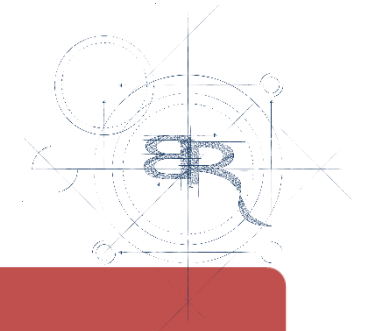
European Institute of
Innovation
and Technology

Widening Participation and Strengthening the European Research Area

Widening participation and spreading excellence

Reforming and Enhancing the European R&I system

Horizon Europe Cluster 6 Food, Bioeconomy, Natural Resources and Environment with 7 'Destinations'



Destination 1: Biodiversity and Ecosystem Services

Destination 2: Fair, healthy and environmentally-friendly food systems from primary production to consumption

Destination 3: Circular economy and bioeconomy sectors

Destination 4: Clean environment and zero pollution

Destination 5: Land, oceans and water for climate action

Destination 6: Resilient, inclusive, healthy and green rural, coastal and urban communities

Destination 7: Innovative governance, environmental observations and digital solutions in support of the Green Deal

Cluster 6: TYPE OF PROJECTS

Research and innovation action (RIA)

Research and innovation action (RIA) that establishes new knowledge or explores a new or improved technology, product, process, service or solution. The EU funding covers up to 100% of the project costs. TLR below 6.

Innovation action (IA)

Innovation action (IA) that produces plans or designs for new or improved products, processes or services including prototyping, testing, demonstrating, piloting, large-scale product validation and market replication. The EU funding covers up to 70% of the project costs. TLR 6-8.

Coordination and support actions (CSA)

Coordination and support action (CSA) that improve cooperation among EU and associated countries to strengthen the European Research Area including, for example, standardisation, dissemination, awareness-raising, communication and networking activities, policy dialogues, mutual learning or studies. The EU funding covers up to 100% of the project costs.

ELIGIBILITY

Consortium composition (collaborative projects)

- at least one independent legal entity established in a Member State, and
- at least two other independent legal entities each established either in a different Member State or an Associated Country.

Gender Equality Plan (applicable only from 2022 on)

Participants that are public bodies, research organisations or higher education establishments from Members States and Associated countries **must have a gender equality plan**, covering minimum process-related requirements.

- A self-declaration will be requested at proposal stage (for all types of participants).
- Included in the entity validation process (based on self-declaration)

ADMISSIBILITY



Same general admissibility conditions

- Applications must be submitted before the call deadline, **electronically** via the Funding & Tenders Portal
- Applications must be **complete, readable, accessible and printable**, and include a **plan for the exploitation and dissemination of results**, unless provided otherwise in the specific call conditions.

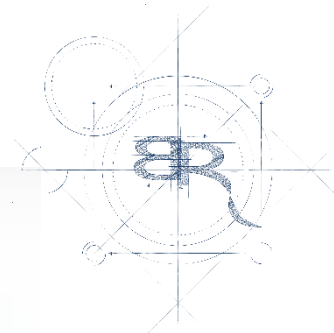
Proposal page limit

Substantial reduction in maximum length:

- RIAs and IAs type of actions: limit for a full application is **45 pages**
- CSAs: limit is **30 pages**
- Exceptions, if any, would be specified in the call text.

1st stage – 10 pages
2nd stage – 45 pages

Evaluation Criteria



Same criteria as in H2020

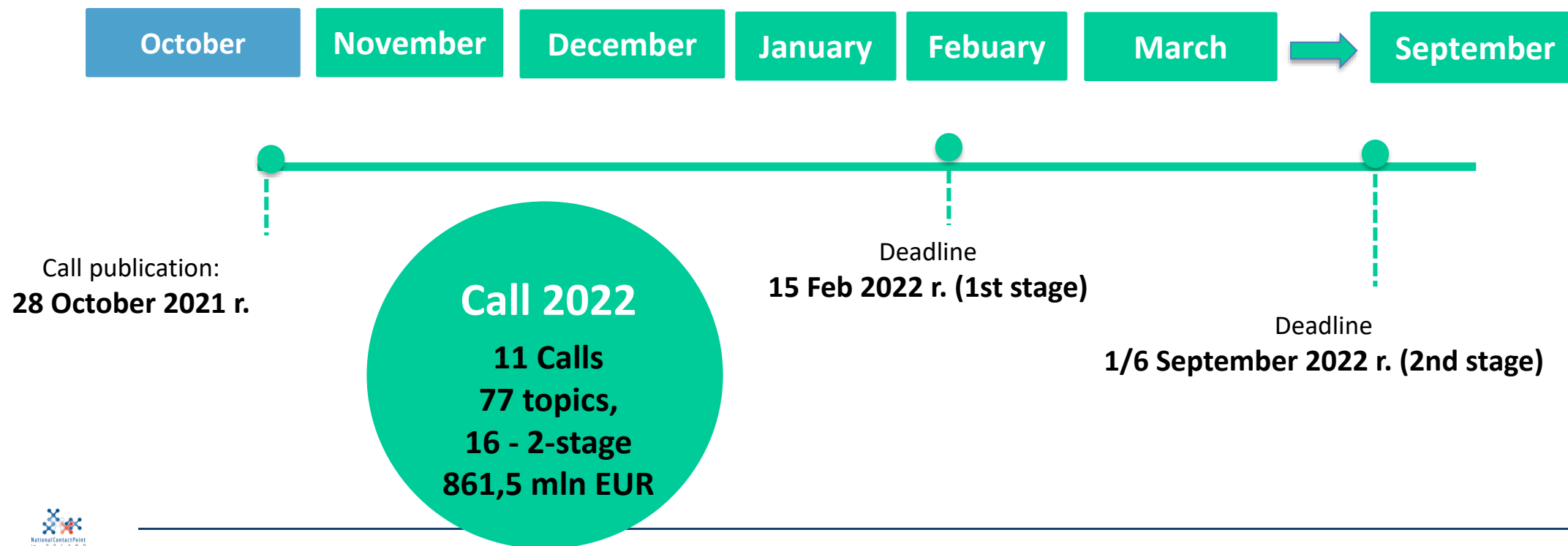
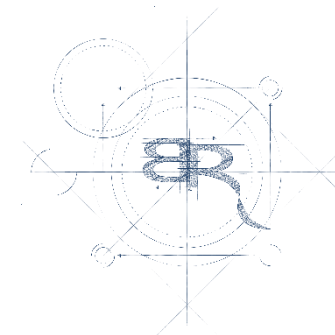
Same three award criteria: '**Excellence**', '**Impact**' and '**Quality and efficiency of the implementation**'. Excellence only for ERC.

Adapted following lessons learnt

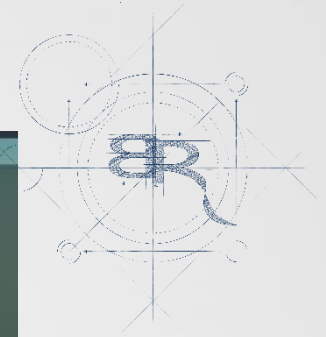
- The number of '**aspects to be taken into account**' have been **reduced**, ensuring that the same aspect is not assessed twice
- **Open Science** practices assessed as part of the scientific methodology in the excellence criterion
- **New approach to impact**: Key Impacts Pathways (KIPs)
- The assessment of the **quality of applicants** is assessed under 'implementation', rather than as a separate binary assessment of operational capacity
- Assessment of **management structures** has been removed.



Calls in Cluster 6, 2021-2022



Networking



Event organised by:
BRIDGE2HE
with NCPs

#HorizonEU

HORIZON EUROPE

BROKERAGE EVENT

CLUSTER 6 | FOOD, BIOECONOMY,
NATURAL RESOURCES,
AGRICULTURE AND ENVIRONMENT

27th October 2021

© European Union, 2021

THE EU RESEARCH & INNOVATION PROGRAMME 2021 - 2027

EUROPEAN UNION

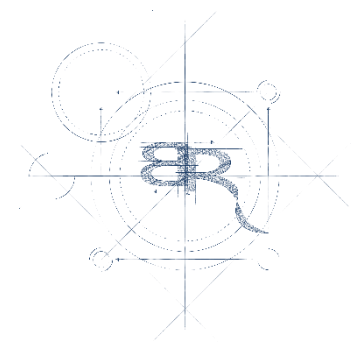
27 October 2021

Horizon Europe Brokerage Event for Cluster 6 - Call 2022

Registration is open now!



NEW APPROACH TO EUROPEAN PARTNERSHIPS



New generation of objective-driven and more ambitious partnerships in support of agreed EU policy objectives

Key features

- Simple architecture and toolbox
- Coherent life-cycle approach
- Strategic orientation

Co-programmed

Based on Memoranda of Understanding / contractual arrangements; implemented independently by the partners and by Horizon Europe

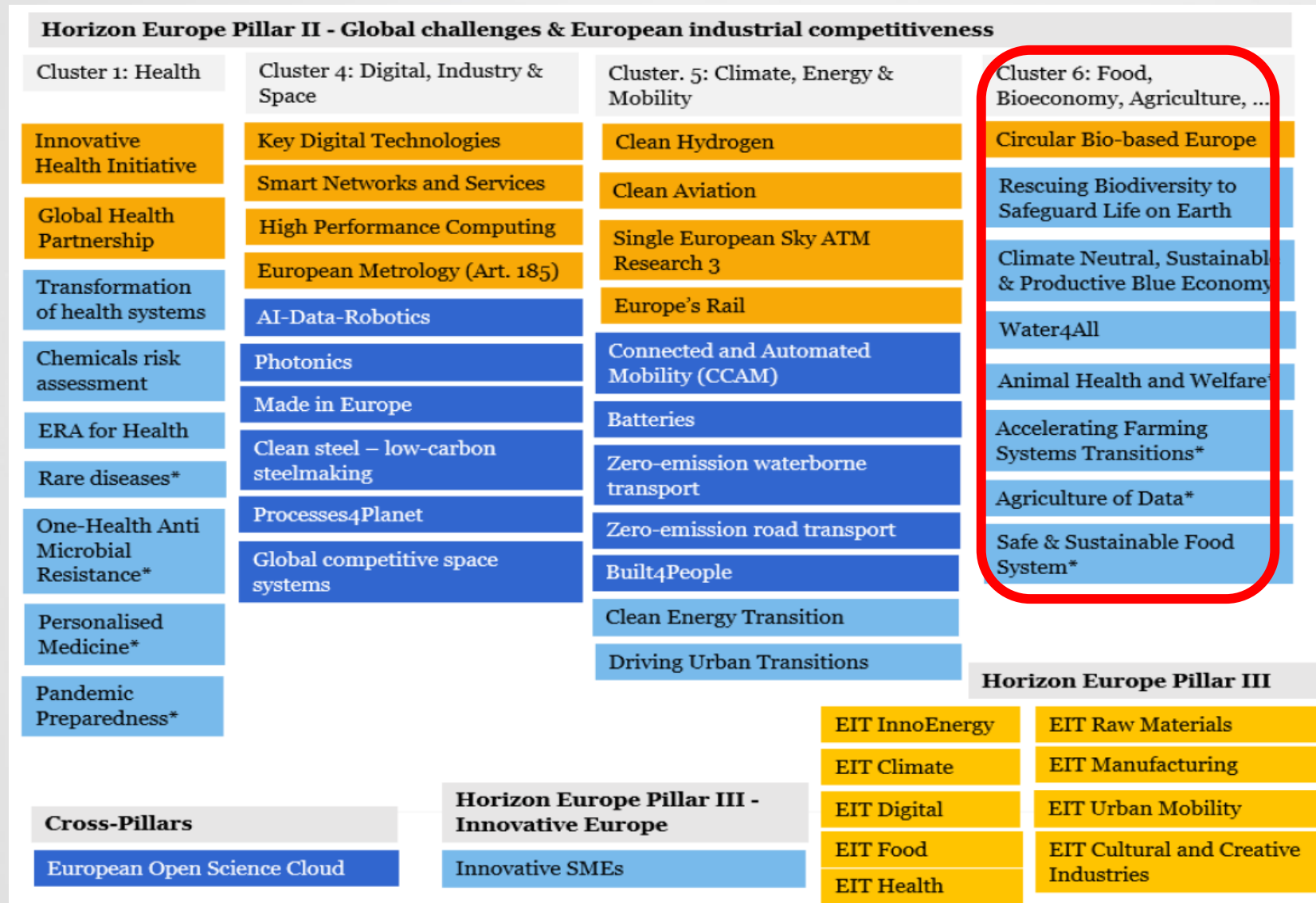
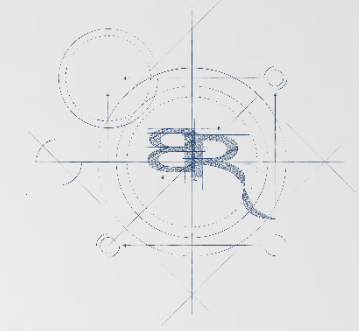
Co-funded

Based on a joint programme agreed and implemented by partners; commitment of partners for financial and in-kind contributions

Institutionalised

Based on long-term dimension and need for high integration; partnerships based on Articles 185 / 187 of TFEU and the EIT-Regulation supported by Horizon Europe

OVERVIEW OF 49 CANDIDATE EUROPEAN PARTNERSHIPS



Institutionalised Partnerships (Art 185/7)








EIT KIC

Co-Programmed

Co-Funded

WHAT ARE THE GOALS?

Cluster 6: Food, Bioeconomy, Natural Resources, Agriculture and Environment

-  Climate neutrality and **adaptation to climate change**
-  Preservation and restoration of **biodiversity** and ecosystems
-  Sustainable and circular management of natural resources; **Bioeconomy**
-  Food and nutrition security; **sustainable food systems**
-  **Balanced development** of rural, coastal and urban areas
-  **Environmental observation**
-  EU Innovation **Ecosystems**

European
Green Deal

An economy
that works
for people

A Europe fit for
the Digital Age

A stronger
Europe
in the world

EU MISSION

R&I Missions

Linking EU's research and innovation to major societal needs; with strong visibility and impact

A mission is a portfolio of actions across disciplines intended to achieve a **bold and inspirational and measurable goal** within a set timeframe, with **impact** for society and policy making as well as relevance for a significant part of the European population and wide range of European citizens.

Horizon Europe defines mission characteristics and elements of governance, and **5 missions areas**.

Five EU missions

Adaptation to
Climate Change



Cancer



Climate-neutral
and Smart Cities



Restore our
Ocean and Waters



Soil Deal
for Europe



MISSION SOIL

A Soil Deal for Europe: 100 living labs and lighthouses to lead the transition towards healthy soils by 2030

1. Reduce **desertification**

2. Conserve soil **organic carbon stocks**

3. Stop **soil sealing** and increase re-use of urban soils

4. Reduce **soil pollution** and enhance restoration



5. Prevent **erosion**

6. Improve soil structure to enhance **soil biodiversity**

7. Reduce the **EU global footprint** on soils

8. Improve **soil literacy** in society

11

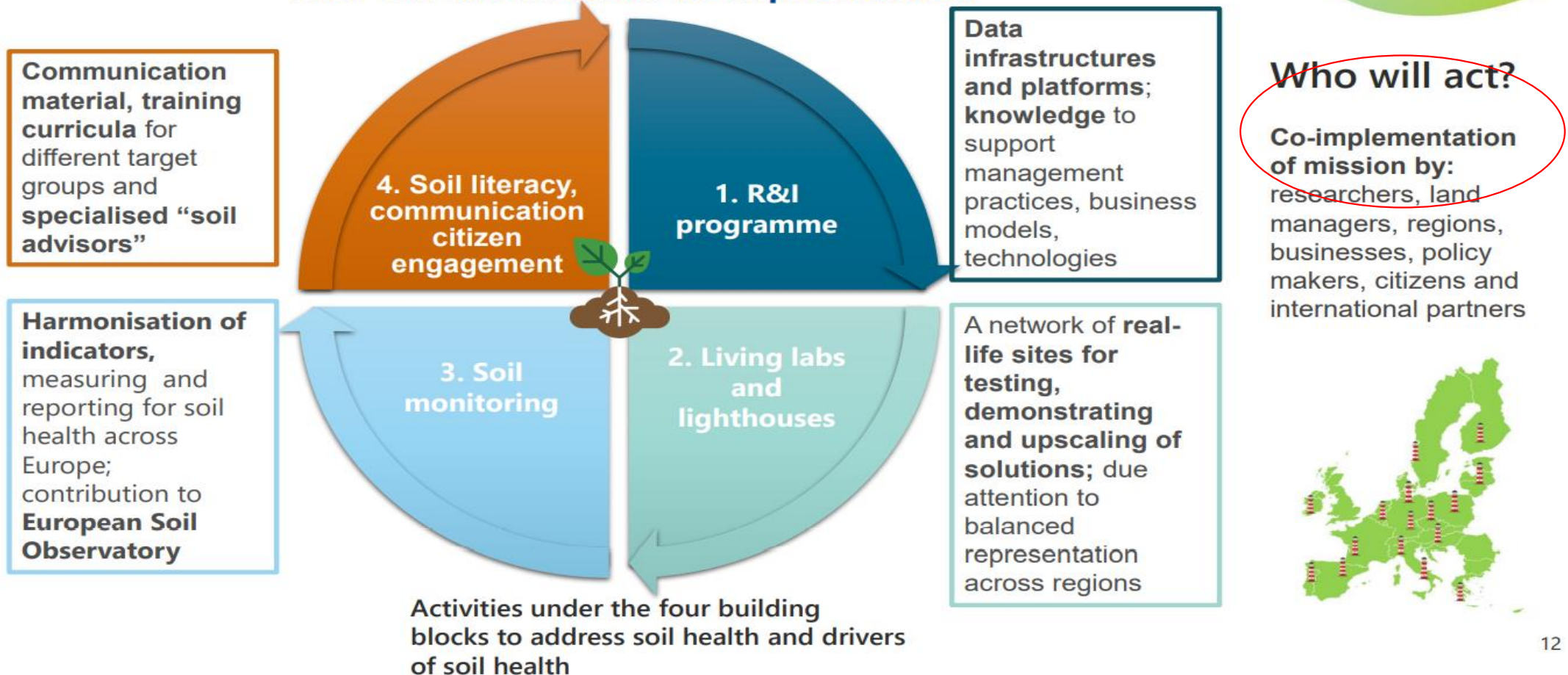
IMPLEMENTATION



EUROPEAN UNION

EU
MISSIONS

How will the mission be implemented?



Living Labs and Lighthouses

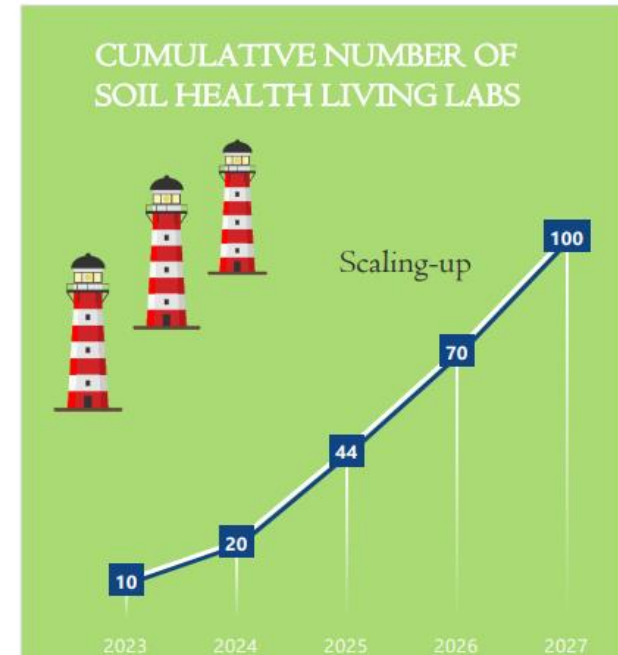


EUROPEAN UNION

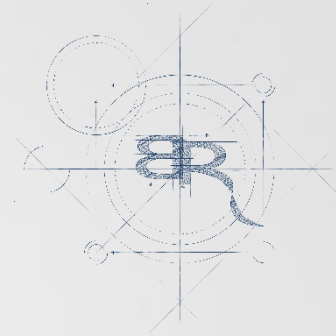
EU
MISSIONS

Creation of 100 Living Labs and Lighthouses

- **Living labs are a core element of the mission** – it reflects the ambition to “do research in new ways”: participatory, interdisciplinary, intersectoral.
- **Living labs (LLs)** are “real-life” places for experiments and innovation: each living lab corresponds to a cluster of sites working together at regional or sub-regional level.
- **Lighthouses** are individual places to showcase good practices. Can be from within or outside LLs.
- **Network of living labs** to be gradually established through consecutive calls for living labs under the various Work Programmes of Horizon Europe.
- Specific criteria for living labs have been developed under the mission to ensure **common approach and comparability of data and experiences**.



13



Contact your NCP

- Guidance on choosing relevant Horizon Europe topics and types of action
- Advice on administrative procedures and contractual issues
- Training and assistance on proposal writing
- Distribution of documentation (forms, guidelines, manuals etc.)
- Assistance in partner search



National Contact Points for Horizon Europe

[Funding & tenders \(europea.eu\)](https://europea.eu)